

# THE NORTHWEST MONTHLY



Published Monthly by the Northwest School of Agriculture of the University of Minnesota, Crookston. Entered as second class matter, December 2, 1916, at the Post Office at Crookston, Minnesota, under the Act of August 24, 1912.

VOL. IX.

CROOKSTON, MINNESOTA, JANUARY, 1925.

NO. 2.

## SECOND TERM EVENTS

Students in attendance for the second term will have the opportunity to hear several noted speakers and participate in an excellent program of entertainments. Dr. J. D. Jungman, superintendent of Sunnyrest Sanatorium, Crookston, addressed the students on January 9. Supt. G. H. Sanberg of the Crookston Schools was present January 11 and Rev. P. E. Moen, Crookston, January 18. Other speakers for the term will be Prof. Andrew Boss, head of farm management division, U. Farm; Fred Leuhring, director of physical education, U. of Minn., and Prof. Francis Jager, head of division of bee culture, U. Farm. Others scheduled for meetings in Crookston will also address the students.

On the entertainment course there will be William Lindsay, pianist, U. of Minn.; Karl Scheurer, violinist, U. of Minn.; Robert Briggs and Mr. Manlove, entertainers. One other lecture course number will be arranged. During the Northwest School Farmers' Week and Winter Shows the students will have the opportunity to attend many of the sessions.

Several basketball games are scheduled and the team is giving a good account of itself. Four class teams are giving an opportunity for all interested in this sport to participate. The skating rink recently completed is proving a popular and healthful recreation. The programs for the other Saturday evenings will include the school dances and parties.

## ANNUAL RED RIVER VALLEY LIVESTOCK ASSOCIATION BANQUET

This event will be held at the New Eagles' Hall, 5:30 P. M. (note the hour), Wednesday, February 11. Plates \$1.25.

Anyone interested in livestock development in the Red River Valley is invited to come. Get your banquet ticket before Wednesday noon either from O. M. Kiser, W. R. Low or L. R. Boyd.

## Northwest School Farmers' Week AND Red River Valley Winter Shows FEBRUARY 9-13, 1925

The ninth annual Red River Valley Livestock Show will be held February 9-13. Interest in the show continues to grow. This year there is promise of one of the largest cattle exhibits that has ever been held. Guernsey exhibitors of the valley will have one of the largest and best exhibits of their breed that has ever been shown. This Guernsey show will come from 18 or 20 different breeders of the Valley. In previous shows more Holsteins have been shown than Guernseys; this year the Holsteins will have a hard time keeping first place in number shown. Keen interest is being exercised as to which breed will be awarded the challenge cup for the best dairy herd exhibited. This cup is offered by the Red River Valley Livestock Breeders association to the breeder exhibiting the best herd. Heretofore the cup has been won by some Holstein breeder.

The largest and best exhibit of boys' and girls' club calves will be shown this year. This part of the show attracts a large degree of attention by visitors, and it is well that it should. Last year the grand champion female in the Holstein class was shown by Myrtle Himrum, a member of the boys' and girls' club from Becker county. History may repeat itself again this year.

Beef breeds of Angus, Shorthorn, and Herefords will be shown. Visitors to the show will have ample opportunity to see what the Red River Valley can do in beef production, and those interested can personally talk with the different exhibitors about some of the problems connected with beef production in this section.

Accommodations for the hog show will be crowded to the limit as usual. Breeds now entered in this part of the show are Berkshires, Chester Whites, Durocs, Poland, and Yorkshires. The Red River Valley can profitably raise swine. If any one has any doubts about the quality of hogs produced in the Northwest, he should visit the show February 9-13,

and see at a glance what breeders are doing in this line.

The only breed of sheep that will be shown is the Shropshire. This breed is common in the Red River Valley. More sheep should be raised in this natural sheep country. This annual winter show is to a great extent stimulating this interest.

Judging of livestock will begin Monday afternoon.

The feature of the shows that always has attracted much interest is the stock judging contests that take place Monday forenoon. Farmers' club teams from 12 to 15 different clubs compete for the silver cup offered by the Red River Valley Livestock Association. For the past three years this cup has been won by teams from Kittson county. Will a team from some other county get the cup this year? Four high school teams will compete in this annual stock judging contest. A new trophy cup has been secured for the high school contest this year. The Warren high school has won the cup three years, which now is the property of that school.

For the first time state agricultural schools will hold a stock judging contest. These three schools are the School of Agriculture, Winnipeg, Manitoba; the West Central School of Agriculture, Morris, Minnesota, and the Northwest School of Agriculture, Crookston, Minnesota.

The animal husbandry department of the Northwest School has been conducting a beef feeding experiment this winter. This trial will be concluded the week before the Winter Shows. The steers in this trial will be on exhibit in the basement of the show pavilion during the week of the shows. A discussion of this experiment will take place Wednesday forenoon, followed in the afternoon by a general livestock program in the armory. Write for program of the week's events.

Forty-five head of high class Holsteins from some of the best herds in  
(Continued on Page 4)

## Program of Meetings and Shows

### EVENING MEETINGS

#### MONDAY EVENING, FEBRUARY 9

Greeting—Sup't C. G. Selvig.  
Address—Mr. J. L. Taber.

#### TUESDAY EVENING, FEBRUARY 10

Address—Dr. Preston J. Bradley.

#### WEDNESDAY EVENING, FEBRUARY 11

Greeting—Dean W. C. Coffey.  
Address—Mr. Fred High.

#### THURSDAY EVENING, FEBRUARY 12

Address—Dr. Raymond Robins.

#### FRIDAY EVENING, FEBRUARY 13

Red River Valley Song Festival.

Bulletin of the

UNIVERSITY OF MINNESOTA

Department of Agriculture

Northwest School and Experiment Station

Crookston, Minnesota

Crookston Series Vol. 18, No. 2., January 1925

Keep This Program With You

#### FIFTEENTH ANNUAL

### NORTHWEST SCHOOL FARMERS' WEEK AND WOMEN'S MEETINGS INFORMATION

**PLACE OF MEETINGS** is the Crookston Armory for the farmers' meetings and the Presbyterian Church for the women's meetings.

**REDUCED RAILROAD RATES** have been granted. Fare and one-half open rate. No certificates are required. Tickets are on sale February 7 to 10, inclusive, with final return limit February 16.

**ADMISSIONS.** On arriving at the Red River Valley Winter Show building, secure admission ticket for the day or the week. There is no ticket required for the day sessions held in the Armory (excepting the rehearsal song program Friday afternoon) and the women's meetings held in the Presbyterian Church. The daily admission to the livestock, farm crops, and poultry exhibits is 50 cents. Admission to each evening program is 50 cents. Day and evening combined on special ticket of admission, 75 cents. One ticket for the entire week is \$2.00.

**LODGING.** For lodging accommodations inquire at the Lodging Booth at the Winter Shows building.

**ASSOCIATION MEETINGS.** Be sure to read carefully the announcements in these pages for the different association meetings, shows and conferences.

### THE WEEK'S PROGRAM

**MONDAY**—Judging stock, farm crops exhibits and poultry. Livestock judging contest. Address by L. J. Taber, Master of National Grange, Columbus, Ohio, in the evening.

**TUESDAY**—Judging stock and poultry. Farm crops meeting both forenoon and afternoon in Armory. Conferences on farm engineering, horticulture and poultry topics in the morning. Address by Dr. Preston J. Bradley, Chicago, in the evening. Women's meetings both forenoon and afternoon.

**WEDNESDAY**—Steer feeding demonstration and addresses in livestock pavilion in forenoon. Conferences on farm engineering, horticulture and poultry in the morning. Livestock meeting in Armory in afternoon. Livestock association banquet, Eagles' Hall, 5:30 o'clock. Address by Dean W. C. Coffey and Mr. Fred High in evening. Women's meetings both forenoon and afternoon.

**THURSDAY**—Meetings dealing with farm and community in Armory both forenoon and afternoon. Conferences on farm engineering, horticulture and poultry in the morning. Tribute to Abraham Lincoln at afternoon's

meeting. Address by Dr. Raymond Robins, Chicago, in the evening. Women's meeting in forenoon only. Joint meeting with the men in afternoon.

**FRIDAY**—Meetings dealing with farm business and marketing problems in Armory both forenoon and afternoon. Conferences on farm engineering and horticulture in the morning. Rehearsal of singers' program in Armory at 1:15. Admission twenty-five cents. Evening program by Northwestern Minnesota Singers' association. Women's meetings both forenoon and afternoon.

### ASSOCIATION MEETINGS

**Members of Stock Judging Contest** teams and junior livestock exhibitors, annual dinner meeting, Crookston Association, 5:30 P. M. Monday, February 9. A. J. Kittleson, in charge.

**Red River Valley Crops and Soils** association annual business meeting, 11:30 A. M. Tuesday, February 10, in the Armory. R. S. Dunham, Secretary.

**Crookston Association of Public Affairs Noon-day Luncheon**, 12:00 o'clock, Wednesday, February 11. A. C. Elliott, in charge.

**Red River Valley Livestock Association Annual Meeting of Stockholders** 4:30 P. M. Wednesday, February 11, in the Armory. O. M. Kiser, Secretary.

**Red River Valley Guernsey Breeders Association**, annual business meeting, February 11, in room at right of entrance, Armory. L. Houske, Secretary.

**Boys' and Girls' Club Conference** 10:00 A. M. Thursday, February 12, in the Armory. A. J. Kittleson in charge.

**Luncheon Meeting** under auspices Crookston Kiwanis Club and Rotary Club, open to all. Eagles' Hall, 12:15 o'clock, Thursday, February 12.

**Minnesota Red River Valley Development** association annual business meeting, Thursday, February 12. Place to be announced. W. R. Low, Secretary.

**Northwest School of Agriculture Alumni** association and annual business meeting, 4:00 o'clock, February 13 at the Northwest School Auditorium. All members of the Alumni association are requested to attend. Annual banquet at Dining Hall, 6:00 P. M. Make reservation for the dinner. Alumni ball in evening. Dr. Harry Hedin, '11, Crookston, in charge.

### EDUCATIONAL CONTESTS

#### LIVESTOCK JUDGING CONTEST

Livestock judging contest for teams representing farm clubs, high schools, Northwest School Inter-class, and teams representing the University of Minnesota, Northwest School, Crookston and West Central School, Morris, and Manitoba Agricultural College (sub-collegiate class), Winnipeg. T. M. McCall and D. H. LaVoi in charge.

Time: 9:00 A. M. February 9.

Judges: Sheep, W. A. Peters; Beef Cattle, W. E. Morris; Dairy Cattle, H. R. Searles; Swine, W. H. Peters.

#### SPELLING CONTEST

Red River Valley Spelling Contest will be held at 9:00 A. M., Friday, February 13 at the Central High School building. The two winners from Becker, Clay, Clearwater, Kittson, Mahanomen, Marshall, Norman, Pennington, Polk, Red Lake and Roseau counties will be eligible to compete in this event. Committee: E. K. Sampson, Ada; Erba Pouliot, Red Lake Falls and Ingeborg Espeseth, Crookston. Local leader, E. W. Avery. The final spell-down will be held at 4:00 o'clock, at the Armory.

#### ESSAY CONTEST

For seventh, eighth, high school and rural and semi-graded school pupils. \$75.00 in prizes. Sup't. A. C. Pederson, Argyle, and O. R. Sande, Thief River Falls, committee.

## POSTURE CONTEST

P. F. Schmidt is chairman of the Better Posture Contest. Three medals will be awarded to the three highest contestants.

## SHOWS AND EXHIBITS

**Red River Valley Livestock Association** ninth annual livestock show of beef cattle, dairy cattle, swine and sheep and junior exhibits of dairy calves and sheep. This association owns the three buildings used for the Red River Valley Winter Shows. Judges: Dairy cattle, H. R. Searles; beef cattle, W. E. Morris; swine, E. F. Ferrin; sheep, W. C. Coffey; junior classes, H. R. Searles and W. C. Coffey, all from University Farm, St. Paul.

**Minnesota Red River Valley Development Association** fifteenth annual farm crops show. The first four farm crops shows were held under the auspices of the Northwest School of Agriculture. In 1914 the Minnesota Red River Valley Development association was organized and took over the farm crops show. This is the eleventh under that management. The Minnesota Crop Improvement association cooperates in financing this show.

Since 1922 the Red River Valley Crops and Soils association, composed of growers who are establishing standards in pure seed production and who are growing pure bred seed in commercial quantities, have also cooperated.

Judges: A. C. Army, R. C. Rose, University Farm, St. Paul; A. G. Tolaas, St. Paul, and R. O. Bridgford, Morris.

**Northern Minnesota Poultry Association** seventeenth annual poultry show. The exhibit is held on the second floor of Annex B. Judge: Geo. W. Hackett, Minneapolis.

**Northwestern Minnesota Seventh annual industrial and implement exhibit and other exhibits:**

- Minnesota Public Health Exhibit.
- Potato Diseases and Marketing Exhibit.
- Grain Grades Exhibit.
- Northwest School Education Exhibit.

**Exhibit of Car Load of Steers**—Twenty-four steers divided into four lots, each of which has been fed a different ration in a feeding trial carried on at the Northwest Experiment Station, will be exhibited during the week in the basement of the Livestock Pavilion. These steers will be shown at the Wednesday forenoon session when the steer feeding trials will be discussed. They will be shipped to market later in the week.

**Winners of Livestock Show Trophies in 1924:**

- Best Beef Herd, Albert Paradis, Brooks.
- Best Dairy Herd, C. L. McNelly, McIntosh.
- Best Holstein Calf Herd, M. C. Kroneman, Fergus Falls.
- Best Sheep Flock, Arthur Marsden, Hendrum.
- Best Swine Herd, F. A. Green, Stephen.
- Best Dairy Calf (junior show) Myrtle Himrum, Lake Park.
- Best Sheep (junior show) to be offered for the first time in 1925.

**Winners of Farm Crops Show Trophy in 1924:**

- Best Peck of Wheat, Orton Olson, Thief River Falls.

**Winners of Stock Judging Contest in 1924:**

- High School Contest, Warren, third time.
- Northwest School, Senior Class team.
- Farm Club, Joe River, (St. Vincent.) Kittson County.

**Winners of Poultry Show Trophies in 1924:**

- Largest and Best Display, Alfred Malmberg, Crookston.
- Highest Scoring Cock bird, Arthur Bredeen, Litchfield.
- Highest Scoring Hen, Olaf Neset, Thief River Falls.
- Highest Scoring Cockerel, Arthur Steenerson, Clearbrook.
- Highest Scoring Pullet, George Anderson, Watertown.
- Best Pen, W. H. Boltmann, Crookston.
- Best Dozen Eggs, Alfred Malmberg, Crookston.

## PUREBRED LIVESTOCK SALES

Holstein, Thursday, February 12.

Chester White, Duroc Jersey and Poland China, Friday, February 13.

## SPECIAL MUSIC

Those who attend the Northwest School Week's meetings will enjoy the splendid music that will be given. The following groups are among those that will appear during the week:

Sixth semi-annual program of Northwestern Minnesota Singers' association, 1:15 and 8:00, Friday, February 13. T. W. Thorson, Fertile, is leader of the 9 chorus groups that make up the combined chorus.

The Winter Shows Mixed Quartet consists of Miss Agnes Bothne, Northwest School; Mrs. Nora Ulland, Crookston High School; Dr. C. L. Oppegard, and Mr. O. W. Peterson, Crookston.

The Ladies' Quartet consists of Miss Dikka Bothne, Minneapolis; Miss Agnes Bothne, Northwest School; Mrs. Nora Ulland, Crookston High School, and Mrs. R. E. Buckingham, Crookston.

The Great Northern Male Quartet.

The Warren Women's Chorus consists of Miss Beatrice Holmquist, Mesdames Ed. Bratrud, G. E. Davis, A. R. Hatfield, C. L. Stevens, C. L. Spaulding, R. B. Taralseth, F. C. Wittensten with Mrs. E. E. Swenson, director, and Miss Agnes Lundgren, accompanist. They were winners in the

1924 Ninth District Federation of Women's Clubs contest.

The choruses from Crookston High School are directed by Mr. F. I. Schweppe, with Mrs. Elsie Homsted, accompanist.

The choruses from the University of Minnesota, Northwest School of Agriculture, are directed by Miss Agnes Bothne, with Miss Reefa Tordoff, accompanist.

The Crookston Municipal Band is directed by Mr. H. L. Smith.

The Crookston High School orchestra is directed by Mrs. Elsie Homsted.

## FARMERS' MEETINGS PROGRAM

## MONDAY, FEBRUARY 9

- 9:00 Livestock judging contest—Livestock Pavilion Judging Arena.
  - 9:00 Judging livestock exhibit—Livestock Pavilion, first floor.
  - 9:00 Judging grain, corn and potato exhibits—Livestock Pavilion, first floor.
  - 9:00 Judging poultry exhibits—Annex B, second floor.
  - 5:30 Dinner meeting of members of judging teams, junior livestock show exhibitors and judges. Winners in the stock judging contest will be announced.—Crookston Association.
- Winners in posture and essay contests will also be announced at this dinner.

## MONDAY EVENING

## AUDITORIUM—ARMORY

- Frank Jeffers, Red Lake Falls, Vice President, Red River Valley Livestock Association, Presiding
  - 7:30 Music—Crookston High School Orchestra.
  - Greeting—C. G. Selvig, General Chairman, Red River Valley Winter Shows.
  - Music—Northwest School Girls' Glee Club.
  - Music—Winter Shows Mixed Quartet.
  - Address—"The Farmer of Tomorrow," L. J. Taber, Master of the National Grange, Columbus, Ohio.
- See Poultry Shows: Be sure to see the entries in this year's Northern Minnesota Poultry association poultry show, second floor, Annex B.

## TUESDAY, FEBRUARY 10

- 9:00 Judging Livestock Exhibits—Livestock Pavilion.
  - 9:00 Judging Poultry Show—Second floor, Annex B.
  - 10:00 Farm Crops Meeting—Main Hall, Armory.
  - Pedigreed Seed Available for 1925.—E. R. Clark.
  - Seed Corn for 1925—R. S. Dunham.
  - Alfalfa For the Red River Valley.—A. C. Army.
- (Continued on Page 5)

## THE NORTHWEST MONTHLY

Issued Monthly by  
THE UNIVERSITY OF MINNESOTA  
NORTHWEST SCHOOL OF  
AGRICULTURE  
C. G. SELVIG, Superintendent

OFFICE  
Northwest Experiment Station,  
Crookston, Minnesota

A monthly publication in the interest of  
agricultural education and home training for  
Northwestern Minnesota.



### RED RIVER VALLEY WEEK

The people who live in this section of the state have a treat in store during the week of February 9 to 13, when the fifteenth annual Red River Valley week with its meetings, shows, contests, luncheons, conferences, and get-togethers, is in session.

There will be something there for everyone. Special conferences on farm engineering, poultry, horticulture, farm crops, livestock and marketing topics have been arranged. The women's meetings will be more interesting and instructive than ever before. All in all, a wonderful week's program has been arranged.

The exhibits bid fair to exceed in number and quality any previous show. Thousands of visitors are coming. Each will gain some new knowledge and add to his equipment something of value. The week is an educational event, one of the largest and most successful of any held in the state.

The Northwest Monthly invites its readers to read the program in this issue carefully. Keep this number and show it to your friends. Organize a group from your community to attend. You and your friends will be fully repaid for a trip to this year's meetings and shows.

### WINTER SHOWS COMING

(Continued from Page 1)

the Valley will be sold in the annual Red River Valley Holstein sale Thursday afternoon, February 12. Beef cattle and bred sows and gilts will be sold on Friday afternoon. These sales always give an opportunity to purchase some of the best foundation stock that can be secured. Anyone interested in these sales should send a request for a catalog to O. M. Kiser, secretary, of the Red River Valley Livestock Association, Crookston.

Don't miss the opportunity of visiting the shows this coming February 9-13. Optimism here prevails; a visit to the shows will send you back home more determined if possible to do better this coming season.

### JUNIOR SHORT COURSE DATES

For thirteen years boys and girls have spent the first week of April attending the Junior Short course at the Northwest School. The dates for the fourteenth annual course is announced for March 30 to April 3, 1925. With the exception of \$3 for board, room and entertainments there is no expense connected with the course. Boys and girls between the ages of 12 and 18, inclusive, may come. In



DEAN WALTER C. COFFEY

Mr. Coffey is the head of the University of Minnesota, Department of Agriculture. He is also a member of the newly appointed Federal Agricultural Commission. He will tell of the work of this commission when he speaks at the Northwest School Farmers' Week meetings on Wednesday, February 11. Dean Coffey's addresses are always well received.

many cases teachers are planning their spring vacation during this week. If schools are in session it has been customary to count the attendance at the short course for attendance at the local schools and issue attendance certificates on that basis. The number attending the course has increased each year and this year's enrollment should be well over 200.

### FINE BASKETBALL PROSPECTS

Indications are that the Northwest School basketball team will have an exceptionally successful season. By defeating the strong Warren team 17-9, January 10, the team had a perfect record for the season after winning three contests before the holidays. Other teams which will be played include Model High, University of North Dakota; Bemidji State Teachers' College, and the high school teams from Thief River Falls, East Grand Forks, Ada and Crookston.

The men who are making a good showing under the direction of Coach D. H. LaVoi are James Hanson, Cass

Lake; Cecil Bergh and Oscar Forseth, Halstad; Harry Hanson, Halma; Allen Gandrud, Detroit; Ernest Thompson, Fosston; Einer Loven, Gatzke; Frank Groves, Bemidji; Elmer Krogstad, Fertile and Joe Skatvold, Twin Valley.

Four class teams are preparing for a strenuous season and a close contest is assured to determine the interclass championship.

### NORTHWEST SCHOOL ALUMNI BANQUET

Fill out blank on last page and send to Dr. Harry Hedin, Crookston, in case you are planning to attend the Alumni Banquet this year.

Be sure to come.

DARRAGH GEDDES, Pres.

### NEW GRAIN VARIETIES TO BE DISTRIBUTED

Velvet, the newly developed, smooth-awned barley, will be increased at the Northwest Station farm and at other Minnesota Experiment Stations this season for distribution in 1926. This variety was approved by the conference of Minnesota experiment station workers at University Farm, St. Paul, December 8-9, and 20 bushels of elite seed was allotted to the Northwest Station for the first large increase fields.

Supt. C. G. Selvig, R. S. Dunham, and E. R. Clark represented the Northwest Station at this annual conference, which was attended by station workers from the Morris, Grand Rapids, Waseca, and Duluth stations, as well as the Central Station of St. Paul. The performance of new varieties under test at the various stations was discussed and plans were outlined for increasing and distributing varieties which had been endorsed unanimously by the conference.

Reports on the first general distribution of Chippewa and Winona, wilt-resistant varieties of flax, sent out last spring, showed that both varieties had stood up well on "flax-sick" soils and had given very satisfactory yields. It is estimated that 5,000 bushels of Chippewa and 2,000 bushels of Winona are available in the state for 1925 seeding. Another newly developed strain of flax, to be known as Redwing, was approved by the conference and will be increased as rapidly as possible. This new variety combines with wilt resistance and high-yielding power the very desirable feature of a distinctive colored blossom, which makes it easily identified in the field.

Gopher, a high-yielding early variety of oats, will be distributed from the Northwest Station for the first time this season. Several hundred bushels of this variety are available. Minota oats; Minnesota No. 184 barley; Marquis, Kota and Mindum (durum) wheat; and Chippewa flax also will be distributed.

## PROGRAM OF MEETINGS AND SHOWS

(Continued from Page 3)

- 10:00 **Farm Engineering Conference—Room B. Armory.**  
The Farm Repair Show and Its Equipment—A. M. Foker.  
Things About a Tractor That are Sometimes Overlooked.—S. L. Victor.  
The Care of Your Storage Battery.—J.E. Schraeder.
- 10:00 **Horticultural Conference—Room C. Armory.**  
Mangels and Rutabagas for Stock Feeding.—T. M. McCall.  
Sugar Beet Production—David Wigand, F. H. Ross, J. A. Slocum.  
The Red River Valley's Sugar Beet Factory.—L. E. Flink.
- 10:00 **Poultry Conference—Room D. Armory.**  
Poultry Diseases, How to Identify Them.—A. M. Pilkey.  
How to Treat Them.—Dr. Harry Hedlin.
- 10:30 **Women's Meeting.**  
Notes of Interest or Pleasure Spots in the Home—Miss Bessie C. Willis.
- 10:30 Annual Business Meeting of Red River Valley Crops and Soils Association.—Main Hall, Armory.
- 1:30 General Meeting, R. S. Dunham, Presiding.—Main Hall, Armory.  
The Kind of Grain that the Trade Wants.—R. H. Black, U. S. Department of Agriculture, Minneapolis.  
Red River Valley Soils.—Dr. F. J. Alway, University Farm, St. Paul.  
The Extension Service and the Crop Outlook for 1925.—F. W. Peck, Director, Agricultural Extension, St. Paul.

## TUESDAY EVENING

- J. E. Sundberg, Kennedy, Member University of Minnesota. Board of Regents, Presiding
- 7:30 General Singing, Audience, Led by Mrs. Lucille Holliday Swain.  
Music—Northwest School of Agriculture Mixed Chorus.  
Music—Winter Shows Mixed Quartet.  
Address—"The Window of the World," Dr. Preston J. Bradley, Chicago.

See the Farm Crops Exhibit: Be sure to inspect the grain, corn, and potato exhibits, first floor Livestock Pavilion.

## WEDNESDAY, FEBRUARY 11

- 9:00 **Livestock Feeders' Meeting—Livestock Pavilion.**  
Steer Feeding Trials at Northwest Experiment Station.—O. M. Kiser, Northwest School, Crookston.  
Beef Cattle Feeding.—W. H. Peters, University Farm, St. Paul.  
Swine Feeding.—E. F. Ferrin, University Farm, St. Paul.
- 10:00 **Farm Engineering Conference—Room B. Armory.**  
Barn Plans and Barn Equipment—A. M. Foker.  
Lubricants and Lubrication.—S. L. Victor.  
Labor Saving Machinery on the Farm.—H. C. Torrance.
- 10:00 **Horticultural Conference—Room C. Armory.**  
Making Home Made Potato Sprays.—T. M. McCall.  
Hot Formaldehyde Treatment for Potatoes.—R. C. Rose.  
Making Potatoes Eligible for Certification.—A. G. Tolaas.  
Harvesting and Preparing Potatoes for Market.—E. C. Johnson.
- 10:00 **Poultry Conference—Room D. Armory.**  
Chicken Culling Demonstration.—A. M. Pilkey.  
Selecting the Breeding Pen.—Geo. W. Hackett.
- 10:30 **Women's Meeting.**  
Curtains and How to Make Them.—Miss Bessie C. Willis.

- 12:00 Luncheon Meeting at Crookston Association of Public Affairs.
- 1:00 Parade of Prize Winners in Red River Valley Livestock Association show.
- 2:00 **Livestock Meeting—Main Hall, Armory.**  
O. M. Kiser, Presiding  
Music—Great Northern Quartet.  
The New Era in Livestock Development.—Dean W. C. Coffey, University Farm, St. Paul.  
Problems in the Livestock Business.—Kenneth McGregor, Page, North Dakota.  
Music—Winter Shows Mixed Quartet.  
Looking Ahead in Livestock for the Red River Valley.—F. W. Peck, University Farm, St. Paul.
- 4:30 Annual Business Meeting of the Red River Valley Livestock Association.
- 5:30 **Eagles' Hall.**  
Annual Dinner of the Red River Valley Livestock Association.  
General Singing, led by Mrs. Lucille Holliday Swain.  
Music by Ladies' Quartet and Great Northern Quartet.  
Presentation of Silver Trophies to Winners in Livestock Show.  
The program of entertainment will be concluded in time to permit those present to reach the Armory at 8:45 P. M.

## WEDNESDAY EVENING

## ARMORY

- C. G. Selvig, Superintendent, Northwest School of Agriculture, Presiding.
- 7:30 Music—Crookston High School Girls' Chorus.  
Music—Ladies' Quartet.  
Address—"Making Service Pay"—Fred High, Michigan City, Indiana.  
General Singing, Audience, Led by Mrs. Lucille Holliday Swain.  
Address by Dean W. C. Coffey and Greetings from Members of the Minnesota Legislature, Minneapolis Civic and Commerce Association, St. Paul Association, and other visitors.  
See the Livestock Exhibits: Be sure to see the livestock exhibited in this year's Red River Valley Livestock Association show.

## THURSDAY, FEBRUARY 12

- 9:00 **Livestock Judging Demonstration—Livestock Pavilion.**
- 10:00 **Community Cooperation (Ten Minute Talks)—Armory.**  
The Right Community Spirit.—Fred High.  
How a Modern Highway Helps Build up the Community.  
Boys' and Girls' Clubs as a Factor in Upbuilding of the Red River Valley.—T. A. Erickson.  
Dairy Calf Club Demonstration—Alice and Ida Landro, Hendrum.  
The Work of the Minnesota Health Department.—Dr. O. E. Locken.  
Red River Valley Winter Shows.—C. H. Zealand.  
Brief reports from representatives of Community, Farm and Commercial Clubs in Northwestern Minnesota.
- 10:00 **Farm Engineering Conference—Room B. Armory.**  
Radio on the Farm.—A. M. Foker.  
Useful Knots, Hitches and Splices.—A. M. Thielan.  
Farm Machinery as a Factor.—S. L. Victor.
- 10:00 **Horticultural Conference—Room C. Armory.**  
Planning a Planting Layout for the Home Grounds.—T. M. McCall.  
Shrubs and Perennial Flowers.—E. W. Schuster.  
The Perennial Border.—W. L. Ireland.
- 10:00 **Poultry Conference—Room D. Armory.**  
Feeds for Poultry and Feeding.—A. M. Pilkey.  
An Amateur Poultryman's Record.—W. F. Munch.  
The Marketing of Chickens and Turkeys.—F. C. Miller.  
Discussion.

- 10:30 **Women's Meeting.**  
Demonstration of Plain Dyeing and "tied and dyed"  
—Miss Bessie C. Willis.
- 12:00 Luncheon meeting at Eagles' Hall, Crookston Rotary and Kiwanis Clubs, in charge.  
Open to all who wish to attend. A program of entertainment features and four five minute talks will be given.
- 1:30 **General Meeting—Main Hall, Armory.**  
C. G. Selvig, Presiding  
Music—Crookston Municipal Band.  
Music—Great Northern Quartet.  
Community Cooperation—W. C. Green, Fargo.  
The Railroad and the Community—E. F. Flynn, St. Paul.  
Music—Ladies' Quartet.  
What the Community Owes the Child—Dr. Caroline Hedger, Chicago.  
Tableau.  
Abraham Lincoln—The Man and His Message—Dr. Raymond Robins, Chicago.

**THURSDAY EVENING  
ARMORY**

- L. Benshoof, Detroit, Vice-President, Minnesota Red River Valley Development Association, Presiding
- 7:30 Singing. Audience, Led by Mrs. Lucille Holliday Swain.  
Music—Crookston High School Boys' Chorus.  
Music—Warren Woman's Club Chorus.  
Address—"The Next Step in Civilization—The Outlawry of War"—Dr. Raymond Robins, Chicago.  
**Special Exhibits:** Be sure to see the Industrial and Farm Machinery Exhibits in Annex B.

**FRIDAY, FEBRUARY 13**

- 9:00 Livestock Judging Demonstration—Livestock Pavilion.
- 9:00 Red River Valley Rural School Spelling Contest—E. W. Avery, in charge.—High School.
- 10:00 Farm Business and Marketing.—Main Hall, Armory.
- 10:00 **Farm Engineering Conference—Room B, Armory.**  
Running Water in Your Farm Home—S. L. Victor.  
Poultry Houses for Northwestern Minnesota—A. M. Foker, A. M. Pilkey.
- 10:00 **Horticultural Conference—Room C, Armory.**  
Top Grafting Apples on Crab Stocks—T. M. McCall.  
Spray Materials for Tree and Small Fruits—E. W. Schuster.  
Strawberry Growing.  
Raspberries for the Mentor District—Joseph Ball.
- 10:30 **Women's Meeting.**  
Millinery—Miss Bernice Nolan, Miss Frances Lindberg.
- 1:15 **Main Hall, Armory.**  
Rehearsal Program by The Northwestern Minnesota Singers' Association. Admission 25c.
- 2:45 Farm Business Meeting—T. M. McCall, Presiding.  
Prosperity for the Red River Valley Through Diversification.  
Making Farming a Safer Business.
- 4:30 Eleventh Annual Red River Valley Rural School Spelling Contest, Final Spell Down.

**FRIDAY EVENING**

- 8:00 **Armory.**  
J. T. Hougen, President of Northwestern Minnesota Singers' Association, Presiding

**PROGRAM OF SONG FESTIVAL**

- 1. Invictus (Orchestra Accompaniment).....Huhn  
Annie Laurie ..... Geibel  
Festival Chorus
- 2. Dawn ..... Parks  
Mentor Male Chorus
- 3. Fanevagt  
Laerken Male Chorus
- 4. Selections by Ladies' Quartet—Miss Dikka Bothne.  
Miss Agnes Bothne, Mrs. Nora Ulland and Mrs. R. E. Buckingham. Miss Reefa Tordoff, Accompanist.
- 5. Kyrie at Sea ..... Aeschner

- Loves Old Sweet Song—Soprano ..... Parks Molloy  
Miss Bothne—Festival Chorus
- 6. Hark the Trumpet ..... Buck  
Morgonstimmung ..... Arr. from Grieg  
Festival Chorus
- 7. Soldiers Chorus ..... Gounod  
Odin Male Chorus
- 8. Selections by Ladies' Quartet.
- 9. Italian Street Scene from Naughty Marietta..Herbert  
Soprano Obligato, Miss Bothne  
Northwest School Boys' Glee Club
- 10 Gendemeers Stream  
Erskine Male Chorus
- 11. The Coppah Moon ..... Shelley  
The Trumpeter ..... Dix  
Festival Chorus

(Note: Program subject to change)

The same number will be sung at the rehearsal program at 1:15 P. M.

**See Farm Crops Exhibit:** Be sure to inspect the grain, corn and potato exhibits, first and second floors of Livestock pavilion.

**WOMEN'S MEETINGS**

**TUESDAY FORENOON**

- Miss Mildred Schenck in charge
- 10:30 Accessories, Notes of Interest or Pleasure Spots in the Home—Miss Bessie C. Willis.

**TUESDAY AFTERNOON**

- Mrs. C. G. Selvig, Presiding
- 1:45 General Singing, Audience, Led by Mrs. Lucille Holliday Swain.
- 2:00 Background and Hangings—Miss Bessie C. Willis.
- 2:40 Organ—Miss Agnes Bothne.
- 2:50 Address—Dean W. C. Coffey.
- 3:20 Vocal Solo—Mrs. E. B. Canan.
- 3:30 The Child Labor Amendment—Miss Marguerite Wells, Minneapolis.

**WEDNESDAY FORENOON**

- Miss Bernice Nolan in Charge
- 10:30 Curtains and How to Make Them—Miss Bessie C. Willis.

**WEDNESDAY AFTERNOON**

- Mrs. Chas. Lohn, Presiding.
- 1:45 General Singing, Audience, Led by Mrs. Lucille Holliday Swain.
- 2:00 Furniture, Choice and Arrangement—Miss Bessie C. Willis.
- 2:40 Pipe Organ Selections, Mrs. Wm. A. Nebelung.
- 2:50 Community Cooperation—Fred High, Michigan City, Indiana.
- 3:20 Music—Mixed Quartet.
- 3:30 Adult Health—Dr. Caroline Hedger, Chicago.

**THURSDAY FORENOON**

- Miss Fanny B. Lippitt in Charge
- 10:30 Demonstration of Plain Dyeing and "tied and dyed"  
—Miss Bessie C. Willis.

**THURSDAY AFTERNOON**

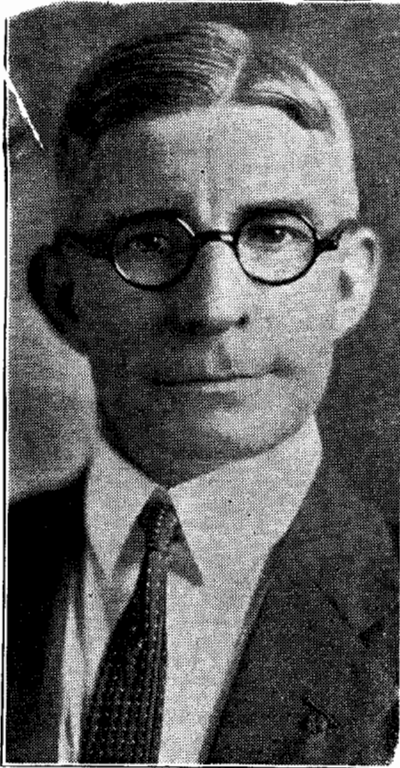
Joint session with the men's meeting at the Armory.

**FRIDAY FORENOON**

- Miss Bernice Nolan in Charge
- 10:30 Crepe Paper and Wax Work—Miss Inger Knutson, Miss Bernice Nolan.

**FRIDAY AFTERNOON**

- Mrs. C. Merriam Stephens, Presiding
- 2:00 Pipe Organ Selections—Miss Reefa Tordoff.
- 2:10 Vocal Solo—F. I. Schweppe, Accompanist, Mrs. Elsie Holmsted.
- 2:20 Address—James Davies, Musical Critic, Minneapolis Tribune
- 2:50 Vocal Duet—Misses Ruth Gurley and Agnes Bothne.
- 3:00 Address—The Influence of Children's Books in the Home—Miss Georgina Lommen, State Teachers' College, Moorhead.



L. J. TABER

Mr. Taber is the master of the National Grange, one of the largest farmer organizations in the country. His home is at Columbus, Ohio. He, too, is a member of the President's Agricultural Commission. He is a forceful speaker who has a message very much worth while. He speaks on Monday evening, February 9.

#### PURE SEEDS AVAILABLE FOR DISTRIBUTION

About seven hundred bushels of Gopher Oats are available for distribution to growers who have clean, fertile soil and who will increase this variety and reserve the yield for seed. Gopher is a newly developed Minnesota variety which has been a consistently high yielder at all the experiment stations in the state during the past four years. It matures very early and grows somewhat taller than most varieties of the early class. It has stiff straw and a large white plump kernel.

Two oats varieties of the mid-season class are available this year: Minota and Improved Ligowa (Minnesota No. 281). Both of these varieties are high yielders and have been tried out quite extensively by growers in this section for several seasons with excellent results. Seven hundred bushels of Minnesota No. 184 (Improved Manchuria) barley also is available. This standard six-row barley has been a popular variety with Minnesota farmers for many years.

Chippewa, the wilt-resistant flax, which was distributed first in 1924 from this station will be offered again this year. Besides the station sup-

ply, several thousand bushels of registered seed of this variety are available among the pure seed growers of Northwestern Minnesota.

Marquis, Kota, and Mindum (durum) wheat, which have been the leading varieties in the Northwest Station trials, can be furnished in limited quantities from the experiment station farm. A few bushels of home grown Wisconsin Black soy beans will be offered. No seed corn will be distributed from the station this year. All seeds have been cleaned and graded carefully, and will be ready for shipment during the month of March.

For complete list of station seeds, prices, and conditions under which seeds can be obtained, address E. R. Clark, Seed Specialist, Northwest Experiment Station, Crookston, Minnesota.

A list of pure seeds including several thousand bushels of certified and registered seed available among the growers in the northwestern counties is being compiled by the Northwest Station in cooperation with the Red River Valley Crops and Soils association. Copies of this list and of the annual state seed list may be secured from this station upon application.

#### SONG FESTIVAL

The sixth semi-annual program by the Northwestern Minnesota Singers' Association will be given at 8:00 P. M. Friday, February 13. A full rehearsal will be given at 1:15, promptly, on the same day. Admission to the latter, twenty-five cents. 150 men in the combined chorus.

#### FROM FAR AND NEAR

'12—Carl A. Berg, Warroad, was a campus visitor during November. Carl operates a Ford garage in Warroad.

'19—Theodore Peterson called at the school on December 5 on his way from Minneapolis, where he is employed, to his home at Fisher.

'21—Edith Shosten is completing her nurse's training work at the Ancker Hospital, St. Paul.

'21—Kenneth Monson writes from the Elmwood Farm, Deedfield, Illinois, that he is herdsman on a farm owned by the National Tea Company of Chicago. The farm is 30 miles out from Chicago. He writes that he often thinks of the N. W. S. A. and his classmates and wishes through the N. W. Monthly to be remembered to all of them.

'22—Iva Dobbdal writes from 313 East Seventh Street, Blue Earth, that she is enjoying her high school work, but often thinks of the N. W. S. A.

'22—Edward Solberg of Fertile, was married to Mabel Martin on November 6.

'23—Clarissa Friday is teaching near Pinewood this year, and is living at the home of K. K. Meland.

'23—Joseph O. Lundin is working for the Ford Motor Company at Iron Mountain, Michigan.

Frances M. Useldinger, Euclid, was married to William R. Keller, on November 5. They will be home at St. Cloud.

Verna Imsdahl was married on November 27 to Carl F. Wallin. They will make their home at Wilmar.

Helen Sathre was married on December third, at Chicago, to William F. Dietrich, of Muskegon, Michigan. They will make their home at 4838 West Madison Street, Chicago.

George Kassa writes from Route 3, Box 26, Hankinson, North Dakota, where he is operating a farm, that is right on the line so that he farms in both North and South Dakota. He asks to have the N. W. Monthly reach him at his new address.

Alma Paulsberg, who attended different summer sessions at the N. W. S. A., graduated from the State Teachers' College at Moorhead on November 26.

Mrs. Carl A. Berg spent the month of October at the Northwest School doing statistical work.

Bernice B. Smith writes from 5212 Alaska Street, Seattle, Washington, that she has 42 foreigners in her classes, mostly Chinese and Japanese, with three Norwegians, a Turkish Jew and a Hungarian. The Norwegian boys could not speak one word of English when they came to the school, but they are bright boys and are learning fast. Some of her pupils are about ready for high school, while others can scarcely say a dozen words in English. She likes her work very much.



DR. PRESTON J. BRADLEY

Dr. Bradley spoke on "The United States of Tomorrow" at the Northwest School Farmers' Week meetings two years ago. It was a wonderful address. Last year he was scheduled to speak again but a Wisconsin blizzard prevented. His home is in Chicago. He speaks on Tuesday evening, February 10, this year.

Superintendent Selvig attended the annual meeting of the National Society for the Promotion of Industrial Education early in December, at Indianapolis. En route to Indianapolis he attended the American Farm Bureau sessions in Chicago. Mr. Selvig is impressed with the progress that is being made in agricultural education throughout the country. While in Indianapolis he met a number of national leaders in this work. All of them, he said, were familiar with the Minnesota School of Agriculture, which they hold in very high esteem.

#### DR. RAYMOND ROBINS

Dr. Robins is considered by many to be one of the most forceful public speakers in the country today. His subject for Thursday evening, February 12, is "The Next Step in Civilization—The Outlawry of War." At the afternoon meeting on Lincoln's Birthday, he will give a brief talk on "Abraham Lincoln—The Man and His Message." It doesn't matter how far away from Crookston you live, it will be worth while for you to come and hear him.

#### ALUMNI MEETING FEB. 13

Complying with the announcement in the last Northwest Monthly, many alumni have notified the secretary, Harry Hedin, Crookston, of their intention of attending the alumni meetings Friday, February 13. The annual meeting will be held in the school auditorium at 5 o'clock and will be followed by the banquet in the dining hall. The dance and get-together will complete the events of the day. All alumni and former students who are planning to come should cooperate with the officers by writing them as soon as possible so that all details may be arranged.

For your convenience the following blank may be used:

Harry Hedin, Secretary,  
Crookston, Minnesota.

Reserve.....plates at the banquet, February 13, at \$1.00 each.

Signed .....

#### SELECTION OF THE BREEDING PEN

During January and February a careful selection of the finest females in the flock should be made from the standpoint of egg production, color, type, and freedom from disease.

These birds should be separated from the general flock and mated to choice males from known breeding. Such matings should be made early enough to allow at least three weeks to elapse before the eggs are saved for hatching, to insure a higher percentage of fertility.

As a general rule, the smaller the mating pen the better, as too many males in one pen will be found unsatisfactory. The number of males to females varies considerably, depending upon breed, size of the flock, season of the year, and vigor of the male bird.



F. W. PECK

Mr. Peck is director of agricultural extension work in Minnesota. He will speak at the Northwest School Farmers' Week meetings on Tuesday and Wednesday afternoons.



FRED HIGH

Mr. High comes highly recommended as a "live wire" community builder. His home is in Michigan City, Indiana. He will speak on Community spirit and cooperation on Wednesday evening, February 11. This is Mr. High's first trip to the Northwest School meetings.

Light, active breeds, like the Leghorns, will require one male to fifteen to twenty females, while the heavier breeds, like the Rocks or Reds, will require one male to from eight to twelve females. In larger flocks the proportion of males to females can be reduced to some extent.

Only by the selection of the breeding pen and the mating of only the best birds can any improvement be made in the flock. By mass breeding no marked improvement can be made. Culling of the flock each fall during September, and again in the spring will aid greatly in the improvement of the farm flock.

Many orders have already been received by the Northwest Station poultry department for hatching eggs, baby chicks, and custom hatching. The volume of the orders already booked for later delivery indicates that 1925 will be a record year in the activities of that department. Poultry raisers are keen to improve the standard of their birds, which can best be done by getting eggs or chicks from a pedigreed flock.

#### COME TO CROOKSTON

Feb. 9 to Feb. 13, and See:

**Greatest Gathering** ever staged in the history of the Red River Valley, to celebrate the annual Red River Valley Winter Shows, the largest farming show in Minnesota, outside of the State Fair.

**Official Ribbons** awarded by the Red River Valley Livestock Association to winners in the livestock contests.

**Choicest Crops** of grains, small seeds, potatoes and sugar beets in Red River Valley contest for \$1,000 premium list.

**Two Acres** of buildings, including the Livestock Pavilion, filled to overflowing with exhibits of interest and value to everyone. Two large auditoriums used for meetings that will be attended by thousands.

**Meetings and Conferences** on numerous farm production, management and marketing topics.

**Meetings** of leading agricultural organizations in the Valley attended by the most prominent men in this section of the state.

**Women's Meetings**—every day during the week, with leading specialists in attendance.

**Biggest, brightest and best show** and meetings of the year. Take advantage of the special reduced rates on all railroads and spend a season of education, pleasure and profit combined with a trip to "The Red River Valley Classic" during the week of February 9, 1925.

**DO NOT MISS THIS OPPORTUNITY**